



Sustainable Global Asset



联合国注册供应商  
The United Nations  
registered suppliers



中国环境标志产品认证  
Chinese environment  
mark product



欧洲CE认证  
The European  
CE certification  
authority



国际ISO9001质量管理体系认证  
The international  
ISO9001 quality  
management



国家质量监督检验检疫总局  
State supervision  
inspection and  
quarantine



国家消防产品认证  
National certification  
of fire protection  
products

# THE ESCAPE SERIES



Energy Saving



Eco-friendly



Low Carbon



Green



Copyright © SGA International Co., Ltd. 2024

All rights reserved. This presentation and its content are protected by copyright laws. Unauthorized use or reproduction of any part of this presentation without prior written permission is strictly prohibited.





Sustainable Global Asset



联合国注册供应商  
The United Nations  
registered supplier



中国环境标志产品认证  
Chinese environment  
mark product



欧洲CE认证  
The European  
CE certification  
authority



国际ISO9001质量管理体系认证  
The international  
ISO9001 quality  
certification



国家质量监督认证  
State supervision  
certification



国家认证绿色环境友好材料  
National certification  
of first green  
environmental protection  
building materials

# ONE BEDROOM | THE ESCAPE



1 QUEEN SIZE BED



1 BATH



1 VERANDA



63m<sup>2</sup> TOTAL AREA



Copyright © SGA International Co., Ltd. 2024

All rights reserved. This presentation and its content are protected by copyright laws. Unauthorized use or reproduction of any part of this presentation without prior written permission is strictly prohibited.



Sustainable Global Asset



联合国注册供应商  
The United Nations  
registered suppliers



中国环境标志产品认证  
Chinese environment  
mark product



欧洲CE认证  
The European  
CE certification  
authority



国际ISO9001质量管理体系认证  
The international  
ISO9001 quality  
management



国家实验室认可  
State laboratory  
recognition



国家认证绿色建材  
National certification  
of green  
environmental protection  
building materials

## STANDARD INCLUSIONS

# ONE BEDROOM | THE ESCAPE

### EXTERNAL

- Designer facade with Aluminium Panel
- R2.5 Insulation for wall and floor
- R6 Insulation for roof/ceiling
- Wind load as per AS 1170.2:2021 region A1-A5
- Main structure designed life  $\geq$  25 years
- Structure welding as per AS1554
- Broken Bridge Aluminium Sliding Door with 6+12+6 tempered glass
- Broken Bridge Aluminium Push-out window with 6+12+6 tempered glass and fly screens
- Aluminium alloy entrance door with frosted glass and smart lock
- External Wall: moisture proof breathable film, PU insulation, OSB board
- Roof: SBS proof breathable film, PU insulation, OSB board, Aluminium panel
- Floor: Galvanized sealing base plate, PU insulation, PE Aluminium film, cement fibre board

### INTERNAL

- Wood composite flooring for all indoor floor
- Wood composite flooring for veranda
- Aluminium alloy pocket door for bathroom
- Wood composite bedroom door
- Linen, pantry
- Dry Zone wall: OSB board, integrated wall panel
- Wet Zone wall: waterproof wall panel, SBS modified bitumen membrane
- Dry Zone ceiling: light steel ceiling keel, integrated wall panel
- Wet Zone ceiling: light steel ceiling keel, waterproof ceiling board
- Bedroom furniture: Wardrobe with iron board, 1 queen size bed, 2 bedside tables

### KITCHEN

- Precform edge laminated bench-tops
- Splashback-toughened mirrored glass
- Sink and tap-ware with watermark
- Laminated custom cabinetry with soft close doors and drawers
- Electric induction cook top, range hood, dish washer, fridge (MOQ apply)
- Bar table and bar chairs

### ELECTRICAL

- 2 Hardwired smoke detectors
- 1 Pendant in kitchen, 1 light at entrance door
- Water heater (tankless or with tank)
- 1 exhaust fan in the bathroom
- Wall mounted air conditioners for bedroom and living area (MOQ apply)
- 19 low energy LED down-lights for bedroom, bathroom, living room and veranda, 2 bedside light
- GPO: 4 in bedroom, two in bathroom, 8 in kitchen, 2 in laundry, 6 in the living room, 3 outdoor
- 65 in TV, air conditioner

### BATHROOM

- Toilet with WaterMark
- Chrome floor waste
- Towel rack, clothes hook, toilet paper holder
- Customized cabinetry with basin, tap-ware (WaterMark), mirror
- Shower partition with Aluminium alloy frame and tempered glass
- Shower head set with WaterMark

### LAUNDRY

- Washing Machine (MOQ apply), Clothes Dryer
- Customized washing basin with tap ware (Water Mark), splashback

## Special Notes

- The installation of chalet is not included, onsite technical support can be provided fees apply
- The installation foundation to be prepared by client, SGA can provide the technical requirement
- Customization such as decoration material, style, color and etc available
- Household Solar+Battery System (off-grid/on-grid) available at additional charges





Sustainable Global Asset



联合国注册供应商  
The United Nations  
registered suppliers



中国环境标志产品认证  
Chinese environment  
mark product



欧洲CE认证  
The European  
CE certification  
authority



国际ISO9001质量管理体系认证  
The international  
ISO9001 quality  
management



国家质量监督检验检疫总局  
State supervision  
inspection and  
quarantine



国家认证认可监督管理委员会  
National certification  
of fire green  
environmental protection  
building materials

# TWO BEDROOM | THE BEDROOM ESCAPE



2 QUEEN SIZE BED



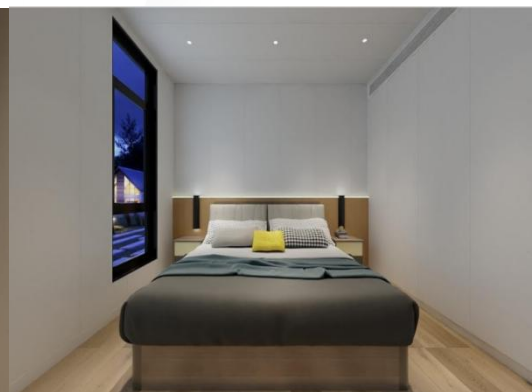
2 BATH



1 VERANDA



126m<sup>2</sup> TOTAL AREA



Copyright © SGA International Co., Ltd. 2024

All rights reserved. This presentation and its content are protected by copyright laws. Unauthorized use or reproduction of any part of this presentation without prior written permission is strictly prohibited.





Sustainable Global Asset



联合国注册供应商  
The United Nations  
registered suppliers



中国环境标志产品认证  
Chinese environment  
mark product



欧洲CE认证  
The European  
CE certification  
authority



国际ISO9001质量管理体系认证  
The international  
ISO9001 quality  
management  
certification



国家质量监督检验检疫总局  
State supervision  
inspection and  
quarantine  
administration



国家认证绿色建材产品  
National certification  
of first green  
environmental protection  
building materials

## STANDARD INCLUSION

# TWO BEDROOM | THE ESCAPE

### EXTERNAL

- Designer facade with Aluminium Panel
- R2.5 Insulation for wall and floor
- R6 Insulation for roof/ceiling
- Wind load as per AS 1170.2:2021 region A1-A5
- Main structure designed life  $\geq 25$  years
- Structure welding as per AS1554
- Broken Bridge Aluminium Sliding Door with 6+12+6 tempered glass
- Broken Bridge Aluminium Push-out window with 6+12+6 tempered glass and fly screens
- Aluminium alloy entrance door with frosted glass and smart lock
- External Wall: moisture proof breathable film, PU insulation, OSB board
- Roof: SBS proof breathable film, PU insulation, OSB board, Aluminium panel
- Floor: Galvanized sealing base plate, PU insulation, PE Aluminium film, cement fibre board

### INTERNAL

- Wood composite flooring for all indoor floor
- Wood composite flooring for veranda
- Aluminium alloy pocket door for bathroom
- Wood composite bedroom door
- Linen, pantry
- Dry Zone wall: OSB board, integrated wall panel
- Wet Zone wall: waterproof wall panel, SBS modified bitumen membrane
- Dry Zone ceiling: light steel ceiling keel, integrated wall panel
- Wet Zone ceiling: light steel ceiling keel, waterproof ceiling board
- Bedroom furniture: Wardrobe with iron board, 1 queen size bed, 2 bedside tables

### KITCHEN

- Precform edge laminated benchtops
- Splashback-toughened mirrored glass
- Sink and tap-ware with watermark
- Laminated custom cabinetry with soft close doors and drawers
- Electric induction cook top, range hood, dish washer, fridge (MOQ apply)
- Bar table and bar chairs

### ELECTRICAL

- 3 Hardwired smoke detectors
- 1 Pendant in kitchen, 1 light at entrance door
- Water heater (tankless or with tank)
- 2 exhaust fans in bathroom
- Wall mounted air conditioners for bedroom and living area (MOQ apply)
- 40 low energy LED down-lights for bedroom, bathroom, living room and veranda, 2 bedside light
- GPO: 4 in bedroom, two in bathroom, 8 in kitchen, 2 in laundry, 6 in the living room, 3 outdoor
- 65 in TV, air conditioner

### BATHROOM

- Toilet with WaterMark
- Chrome floor waste
- Towel rack, clothes hook, toilet paper holder
- Customized cabinetry with basin, tap-ware (WaterMark), mirror
- Shower partition with Aluminium alloy frame and tempered glass
- Shower head set with WaterMark

### LAUNDRY

- Washing Machine(MOQ apply), Clothes Dryer
- Customized washing basin with tap ware (Water Mark), splashback

## Special Notes

- The installation of chalet is not included, onsite technical support can be provided fees apply
- The installation foundation to be prepared by client, SGA can provide the technical requirement
- Customization such as decoration material, style, color and etc available
- Household Solar+Battery System (off-grid/on-grid) available at additional charges

Copyright © SGA International Co., Ltd. 2024

All rights reserved. This presentation and its content are protected by copyright laws. Unauthorized use or reproduction of any part of this presentation without prior written permission is strictly prohibited.





Sustainable Global Asset



联合国注册供应商  
The United Nations  
registered suppliers



中国环境标志产品认证  
Chinese environment  
mark product



欧洲CE认证  
The European  
CE certification  
authority



国际ISO9001质量管理体系认证  
The international  
ISO9001 quality  
management  
certification



国家质量监督检验检疫总局  
State supervision  
inspection and  
quarantine  
administration



国家认证认可监督管理委员会  
National certification  
of fire green  
environmental protection  
building materials

# THREE BEDROOM | THE BEDROOM ESCAPE



3 QUEEN SIZE BED



2 BATH



1 VERANDA



126m<sup>2</sup> TOTAL AREA



Copyright © SGA International Co., Ltd. 2024

All rights reserved. This presentation and its content are protected by copyright laws. Unauthorized use or reproduction of any part of this presentation without prior written permission is strictly prohibited.





Sustainable Global Asset



联合国注册供应商  
The United Nations  
registered suppliers



中国环境标志产品认证  
Chinese environment  
mark product



欧洲CE认证  
The European  
CE certification  
authority



国际ISO9001质量管理体系认证  
The international  
ISO9001 quality  
management



国家认证认可监督管理委员会  
State certification  
authority



国家认证认可监督管理委员会  
National certification  
of fire green  
environmental protection  
building materials

## STANDARD INCLUSION

# THREE BEDROOM | THE BEDROOM ESCAPE

### EXTERNAL

- Designer facade with Aluminium Panel
- R2.5 Insulation for wall and floor
- R6 Insulation for roof/ceiling
- Wind load as per AS 1170.2:2021 region A1-A5
- Main structure designed life  $\geq$  25 years
- Structure welding as per AS1554
- Broken Bridge Aluminium Sliding Door with 6+12+6 tempered glass
- Broken Bridge Aluminium Push-out window with 6+12+6 tempered glass and fly screens
- Aluminium alloy entrance door with frosted glass and smart lock
- External Wall: moisture proof breathable film, PU insulation, OSB board
- Roof: SBS proof breathable film, PU insulation, OSB board, Aluminium panel
- Floor: Galvanized sealing base plate, PU insulation, PE Aluminium film, cement fibre board

### INTERNAL

- Wood composite flooring for all indoor floor
- Wood composite flooring for veranda
- Aluminium alloy pocket door for bathroom
- Wood composite bedroom door
- Linen, pantry
- Dry Zone wall: OSB board, integrated wall panel
- Wet Zone wall: waterproof wall panel, SBS modified bitumen membrane
- Dry Zone ceiling: light steel ceiling keel, integrated wall panel
- Wet Zone ceiling: light steel ceiling keel, waterproof ceiling board
- Bedroom furniture: Wardrobe with iron board, 1 queen size bed, 2 bedside tables

### KITCHEN

- Precform edge laminated benchtops
- Splashback-toughened mirrored glass
- Sink and tap-ware with watermark
- Laminated custom cabinetry with soft close doors and drawers
- Electric induction cook top, range hood, dish washer, fridge (MOQ apply)
- Bar table and bar chairs

### ELECTRICAL

- 4 Hardwired smoke detectors
- 1 Pendant in kitchen, 1 light at entrance door
- Water heater (tankless or with tank)
- 2 exhaust fan in the bathroom
- Wall mounted reverse cycle air conditioners for bedroom and living area (MOQ apply)
- 42 low energy LED down-lights for bedroom, bathroom, living room and veranda, 2 bedside light
- GPO: 4 in bedroom, two in bathroom, 8 in kitchen, 2 in laundry, 6 in the living room, 3 outdoor
- 65 in TV, air conditioner

### BATHROOM

- Toilet with WaterMark
- Chrome floor waste
- Towel rack, clothes hook, toilet paper holder
- Customized cabinetry with basin, tap-ware (WaterMark), mirror
- Shower partition with Aluminium alloy frame and tempered glass
- Shower head set with WaterMark

### LAUNDRY

- Washing Machine (MOQ apply), Clothes Dryer
- Customized washing basin with tap ware (Water Mark), splashback

## Special Notes

- The installation of chalet is not included, onsite technical support can be provided fees apply
- The installation foundation to be prepared by client, SGA can provide the technical requirement
- Customization such as decoration material, style, color and etc available
- Household Solar+Battery System (off-grid/on-grid) available at additional charges

Copyright © SGA International Co., Ltd. 2024

All rights reserved. This presentation and its content are protected by copyright laws. Unauthorized use or reproduction of any part of this presentation without prior written permission is strictly prohibited.





Sustainable Global Asset



联合国注册供应商  
The United Nations  
registered suppliers



中国环境标志产品认证  
Chinese environment  
mark product



欧洲CE认证  
The European  
CE certification  
authority



国际ISO9001质量管理体系认证  
The international  
ISO9001 quality  
management



国家质量监督认证  
State supervision  
certification



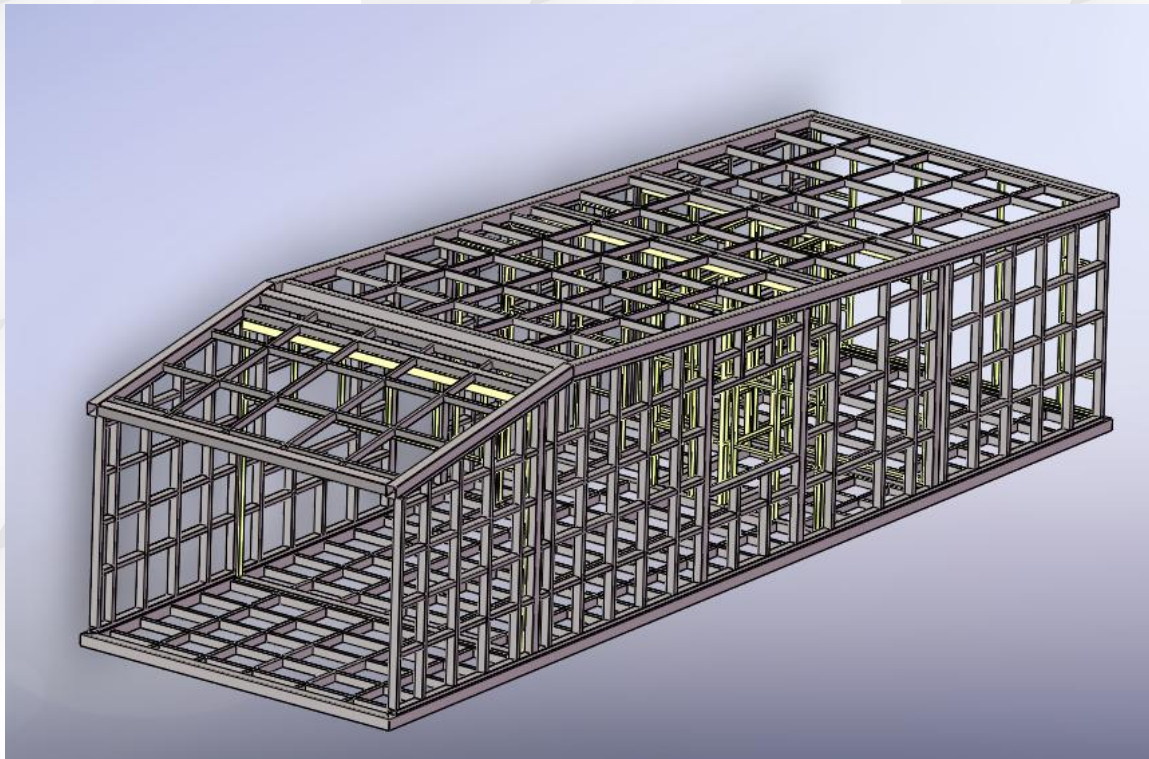
国家认证绿色环保建筑材料  
National certification  
of first green  
environmental protection  
building materials

## GENERAL TECHNICAL SPECIFICATION

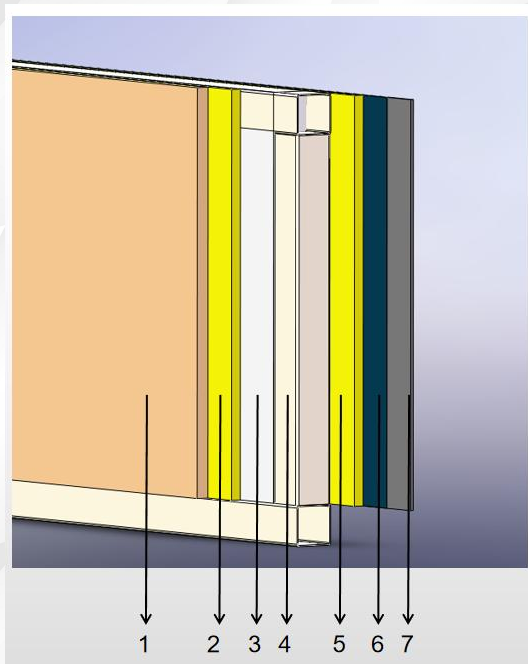
ITEMS	DETAILS
<b>MIAN STRUCTURE SYSTEM</b>	The structural design is designed as per Wind Region A of Australian Wind Code AS1170.2:2021. The main frame is made of Galvanized Steel as the main material welded as per AS1554, with designed service life $\geq 25$ years.
<b>WINDOW &amp; DOOR SYSTEM</b>	The fully enclosed broken bridge window is inlaid with double layer tempered hollow Low-E glass which has excellent heat insulation performance and good light transmittance. Aluminum alloy door with tempered glass is used for the entrance door with intelligence lock, with advantage of safe,unobstructed, private, environmentally friendly, thermal insulation and sound insulation
<b>THERMAL INSULATION &amp; EXTERNAL WALL SYSTEM</b>	The main frame is fixed with strength composite materials to ensure sufficient strength and stability of the chalet Polyurethane foam + extruded board, thermal resistance value 3.2mi-k/W Customized aluminum plate with fluorocarbon paint, featuring high strength, high pressure resistance, oxidation resistance and excellent texture
<b>INDOOR DECORATION</b>	Standard color customized integrated plate ceiling, customized SPC flooring and wall panel, all made of good fireproof performance, high weather resistance, formaldehyde free material Fashionable and beautiful, energy saving and environmentally friendly, green and comfortable
<b>OUTDOOR DECKING</b>	The outdoor waterproof floor can accommodate four outdoor chairs and an outdoor table, BBQ device, providing a wide view
<b>ELECTRICAL INSTALLATION</b>	All electrical wiring and installation as per AS3000 Electrical Distribution Box (Circuit breaker with RCD protection), GPOs (Waterproof GPOs are used for outdoor area), Switches and lights Smoke Detector
<b>PLUMBING</b>	Waterproofing for Toilet and shower as per AS3740 PPR pipe used for the water supply, copper pipe can be used as optional at additional cost Drainage pipe as per AS/NZS 1260
<b>BATHROOM</b>	Basin, faucet, shower, toilet all with high quality and WaterMark Certification Customized dry and wet separation integrated toilet
<b>WHITE GOODS</b>	Dishwasher, electric cook-top, range hood, clothes dryer, electric water heater (Gas water heater optional), 65inch TV, Wall mounted AC (Ducted air-con system optional) , fridge, clothes washer, micro wave (optional)
<b>FURNITURE</b>	Queen size bed, mattress, wardrobe, pantry, kitchen carpentry, TV cabinet, coffee table, bar table, laundry carpentry, coach, outdoor table and chair set



## THE MAIN STRUCTURAL



## THE WALL



1. Fire Resistance & Waterproof Integrated wall panel (style and material can be customized)
2. Fire Resistance OSB Board
3. Polyurethane spray insulation
4. Galvanized Steel square tube
5. Fire Resistance OSB Board
6. PE polymer breathable membrane
7. Aluminum Plate 1.0mm





Sustainable Global Asset



联合国注册供应商  
The United Nations  
register suppliers



中国环境标志产品认证  
Chinese environment  
mark product



欧洲CE认证  
The European  
CE certification  
authority



国际ISO9001质量管理体系  
The international  
ISO9001 quality  
management

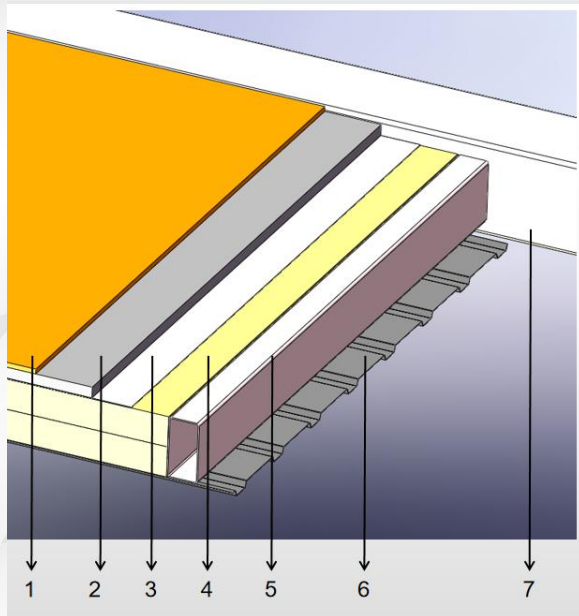


国家质量监督认证  
State supervision  
certification



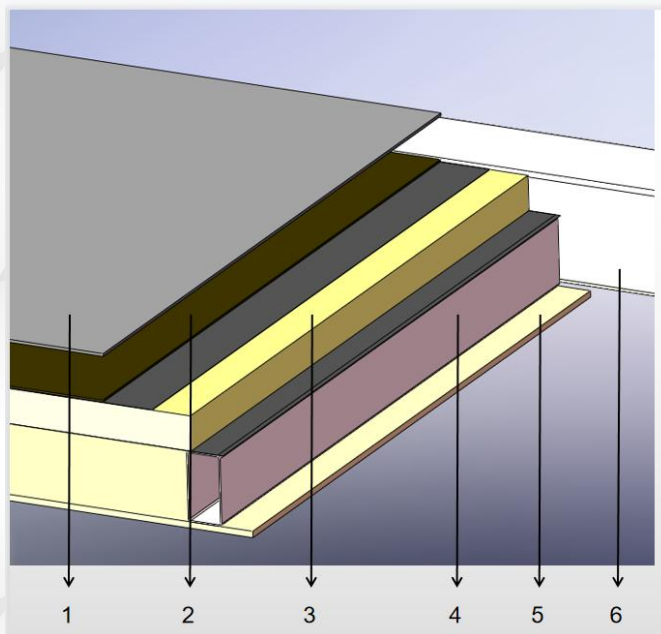
国家认证防火绿色环保建筑材料  
National certification  
of fire green  
environmental protection  
building materials

## THE FLOOR



1. Fire Resistance & Waterproof SPC floor panel (style and material can be customized)
2. High Strength Cement Fibre Board-Asbestos Free
3. PE aluminum tin foil moisture proof film
4. Polyurethane spray insulation
5. Galvanized Steel Square Tube
6. Color-coated roll pressing integrated board
7. Galvanized Steel Square Tube

## THE ROOF



1. Aluminum plate 1.0mm
2. Fire Resistance OSB board + SBS modified bitumen membrane
3. Polyurethane spray insulation
4. Galvanized Steel Square Tube
5. Light Steel Ceiling keel + Integrated Ceiling Panel
6. Galvanized Steel Square Tube

Copyright © SGA International Co., Ltd. 2024

All rights reserved. This presentation and its content are protected by copyright laws. Unauthorized use or reproduction of any part of this presentation without prior written permission is strictly prohibited.



Sustainable Global Asset



联合国注册供应商  
The United Nations  
registered suppliers



中国环境标志产品认证  
Chinese environment  
mark product



欧洲CE认证  
The European  
CE certification  
authority



国际ISO9001质量管理体系认证  
The international  
ISO9001 quality  
management

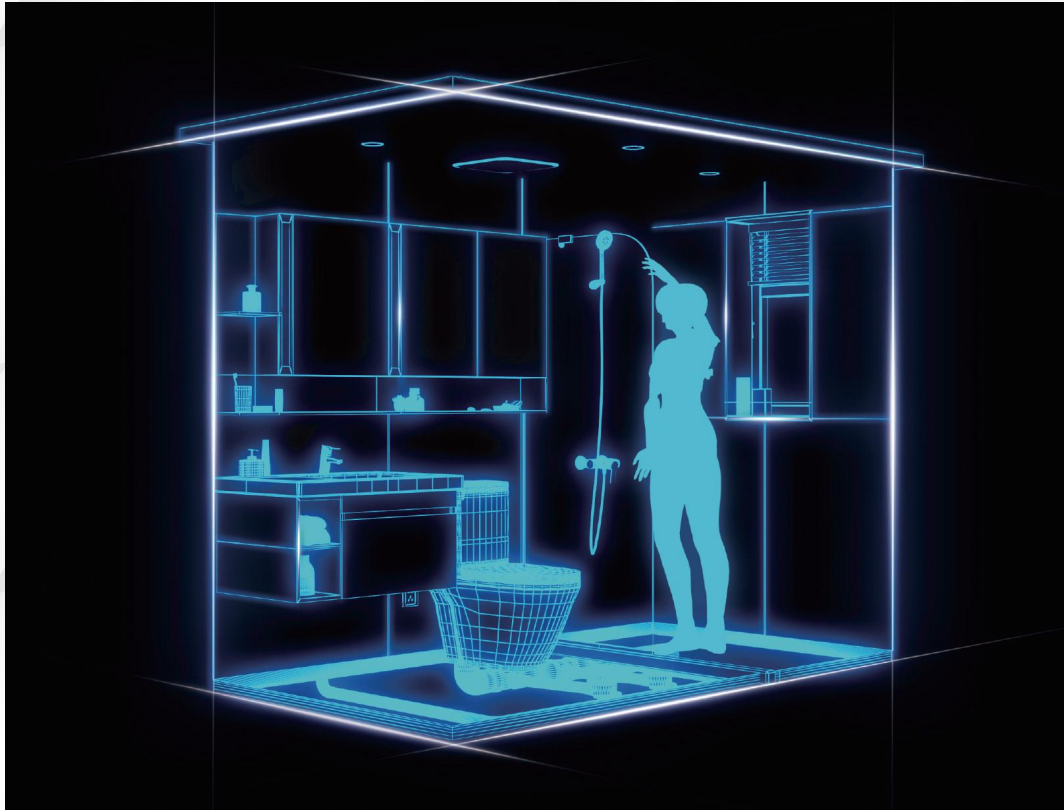


国家质量监督检验检疫总局  
State supervision  
inspection and  
quarantine



国家消防产品认证  
National certification  
of fire protection  
products

## THE BATHROOM



Copyright © SGA International Co., Ltd. 2024

All rights reserved. This presentation and its content are protected by copyright laws. Unauthorized use or reproduction of any part of this presentation without prior written permission is strictly prohibited.